



World of Stones®
LIVE WITH NATURE



Natural Stone Collection
www.worldofstones.com

WELCOME TO OUR LANDSCAPING SUPPLIES BROCHURE

Since 1999, World of Stones has been the brand to trust.

Welcome to World of Stones!

We are a leading exporter and supplier of premium natural stone paving and high-quality porcelain tiles, dedicated to transforming spaces with our superior products. Since our founding in 1999, we have achieved remarkable growth, with an annual turnover of 60 million US dollars and the export of over 4000 containers each year.

Our team of young, dynamic professionals is passionate about providing exceptional products and services. We emphasize rigorous quality control at every stage of production, ensuring that our natural stone and porcelain tiles meet the highest standards of excellence. We offer an unparalleled range of natural

stone and porcelain products, perfect for outdoor designs and hard landscaping applications.

Our selection includes a variety of colors, textures, and finishes, each piece characterized by exotic style and exceptional durability. From paving to intricate stone crafts, elegant porcelain tiles for indoor spaces, flexible stone veneer for interior wall decor, stone pebbles for landscaping, and bricks for exterior walls, our products are designed to enhance environments with elegance and resilience.

Join World of Stones for top-tier craftsmanship and quality in outdoor paving, tiling, and interior decor solutions worldwide!



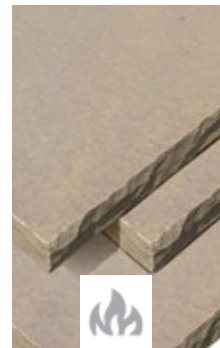
Premia Collection - Sawn Edges - Castle Grey

CONTENTS

Surface Finishes	6
Edge Finishes	7
<u>Exotic Collection</u>	
Castle Grey	8
Imperial White	10
Ochre Yellow	11
<u>Premia Collection</u>	
Lanier	12
Cloudy Black	14
Sierra	16
Sedona Rustic	17
Castle Grey	18
Desert Buff	19
Sunset Buff	20
Autumn Brown	21
<u>Finishing Accessories</u>	
Tumbled Pavers	24
Sills	25
Treads	26
Steps	27
Copings	30
Stepping Stones	32
Decorative Pebbles	34
Installation Guidelines	36
Sizes & Laying Pattern	37
General Information	38

SURFACE FINISHES

Illustrated below is the selection of standard finishes we offer together with quick reference symbols which appear throughout the catalog.



FLAMED

A blowtorch is used to heat the stone at a very high temperature and rapidly cooled simultaneously to achieve a unique desired texture.



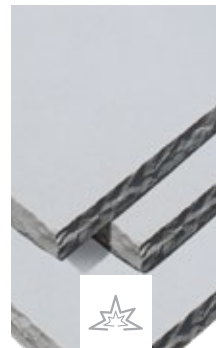
HONED

We achieve a honed finish by using an abrasive to bring out the reflection of stone, creating a consistent surface that is stunning and smooth.



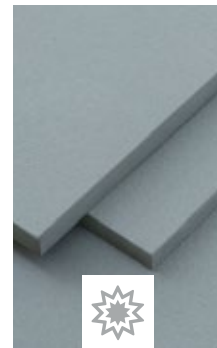
NATURAL

Natural stone is split along the natural lines. This results in surfaces that are riven and undulating in texture.



SHOTBLASTED

This complex multistep process involves honing the product and peppering the units with shots (small beads of steel) fired at a high velocity with compressed air that results in the stippled surface.



HAMMER BRUSH

A brush repeatedly runs over the shotblasted stone surface to achieve a shotblasted but soft finish.



Keep an eye out for the symbols mentioned below throughout the brochure.



BULLNOSED

This process can be done by both machine and hand, making the edge of the product rounded, perfect for steps.



HANDSPLIT

The stone is split manually with a hammer & chisel along the edges. Split faces run inwards towards the stone face.



RECTIFIED

Rectification is carried out by mechanically cutting the Cerapave Porcelain slab to a predefined size and making the edges regular.



ROCK FACED

The stone is hand-crafted along the edges to create a textured, 3D look that runs perpendicular along the direction of the stone.



SAWN

A sawn edge is achieved by using a machine to saw the side of the paving, thus creating a smooth, straight edge.



TUMBLLED

Stone is tumbled in a machine (similar to a cement mixer) which gives the product a smooth surface with edges that have natural aged look.

EXOTIC COLLECTION

We offer an extensive choice of natural stones to fit every mood and purpose. Our Exotic Collection includes modern and classic natural stone pavers with authentic finishes. They are not only stunning but also deliver high durability that can withstand the test of time.



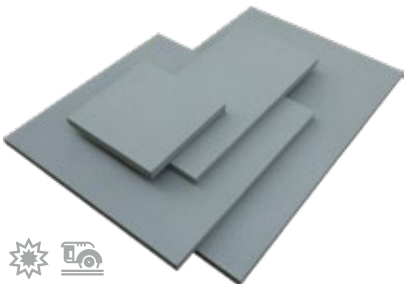
SIZES LENGTH X WIDTH	PROJECT PACK
12" X 12" (30cm X 30cm)	9
24" X 12" (60cm X 30cm)	13
24" X 24" (60cm X 60cm)	13
36" X 24" (90cm X 60cm)	13

Exotic Collection - Castle Grey



THE PERFECT PARTNER

Create exquisite garden features by combining the Castle Grey Paving from our Exotic Collection with **Castle Grey Treads** (refer to page no. 34), **Copings** (refer to page no. 38), **Steps** (refer to page no. 36), **Sills** (refer to page no. 30), and **Pier Caps** (refer to page no. 32).



CASTLE GREY



IMPERIAL WHITE



OCHRE YELLOW



Exotic Collection - Imperial White



THE PERFECT PARTNER

To create a perfect combination, you can also use **Treads** (refer to page no. 34) or **Sunset Buff Steps** (refer to page no. 36), **Copings** (refer to page no. 38), and **Sills** (refer to page no. 30) alongside this paving.



Exotic Collection - Ochre Yellow



THE PERFECT PARTNER

You can also use **Treads** (refer to page no. 34), and **Copings** (refer to page no. 38) alongside the Ochre Yellow paving from our Exotic Collection.

PREMIA COLLECTION

HAND SPLIT EDGES

From a cozy patio to a luxurious outdoor living space, the hand-split pavers from our Premia Collection will suit any kind of outdoor decor. They give a cool, neutral, and balanced effect to any landscaping project while enhancing its overall charm.



SIZES LENGTH X WIDTH	SINGLE SIZE PACK	PROJECT PACK
12" X 12" (30cm X 30cm)	85	9
24" X 12" (60cm X 30cm)	85	13
24" X 24" (60cm X 60cm)	40	13
36" X 24" (90cm X 60cm)	28	13

Products marked with (*) are only available in Project pack size.

Premia Collection - Lanier



AUTUMN BROWN



CASTLE GREY



DESERT BUFF



LANIER*



SUNSET BUFF

PREMIA COLLECTION

SAWN EDGES

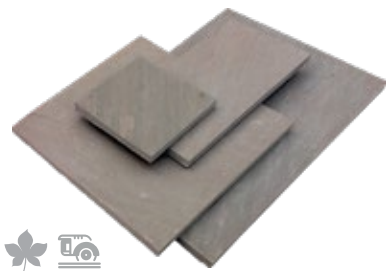
Bring a clean, modern look to your flooring with sawn edge pavers from our Premia Collection. Available in seven exciting colors, these pavers can deliver a pristine look and an aged appearance. They bring aesthetic beauty and functionality to any outdoor living space.



SIZES LENGTH X WIDTH	SINGLE SIZE PACK	PROJECT PACK
12" X 12" (30cm X 30cm)	85	9
24" X 12" (60cm X 30cm)	85	13
24" X 24" (60cm X 60cm)	40	13
36" X 24" (90cm X 60cm)	28	13

Products marked with (*) are only available in Project pack size.

Premia Collection - Cloudy Black



AUTUMN BROWN



CASTLE GREY



CLOUDY BLACK*



DESERT BUFF



SEDONA RUSTIC*



SIERRA*



SUNSET BUFF



Premia Collection - Sierra



THE PERFECT PARTNER

You can also use our range of **Treads** available in the same color (refer to page no. 34) alongside the Sierra paving from our Premia Collection. It will also create a great combination with **Sills** (refer to page no. 30).



Premia Collection - Sedona Rustic



THE PERFECT PARTNER

To create an excellent feature that complements your paving, try **Treads** (refer to page no. 34) alongside the Sedona Rustic paving slabs.



Premia Collection - Castle Grey



Premia Collection - Desert Buff



THE PERFECT PARTNER

This product is also available in **hand-split edges** (refer to page no. 12), **stepping stones** (refer to page no. 40), **Treads** (refer to page no. 34), **Copings** (refer to page no. 38), **Steps** (refer to page no. 36), **Sills** (refer to page no. 30), and **Pier Caps** (refer to page no. 32).



THE PERFECT PARTNER

This product can create a great combination with **Ochre Yellow** or **Sedona Rustic Treads** (refer to page no. 34). It also goes well with **Ochre Yellow Coping** (refer to page no. 38).



Premia Collection - Sunset Buff



Premia Collection - Autumn Brown



THE PERFECT PARTNER

Will create a perfect combination with **Sunset Buff Tumbled Pavers** (refer to page no. 28), **Sills** (refer to page no. 30), **Pier Caps** (refer to page no. 32), **Treads** (refer to page no. 34), **Steps** (refer to page no. 36), **Copings** (refer to page no. 38), and **Stepping Stones** (refer to page no. 40).



THE PERFECT PARTNER

This product will create a wonderful medley with **Treads** (refer to page no. 34) and **Stepping Stones** (refer to page no. 40).

FINISHING ACCESSORIES

Heighten the appearance of any patio, driveway or front entrance with our range of finishing accessories. They add the final touch to vertical elements and can also provide a platform for existing garden components.



Treads - Castle Grey

TUMBLED PAVERS

Tumbled Pavers reflect the design hues of age-old pavers with their timeless warmth and beauty. Our Tumbled Pavers have Natural Riven Surface with sawn edges with an aged appearance that can be used very effectively in traditional garden designs but is equally at home in more contemporary schemes.



SIZES LENGTH X WIDTH	PROJECT PACK
6" X 6" (15cm X 15cm)	180
6" X 9" (15cm X 22cm)	180
6" X 12" (15cm X 30cm)	90

Tumbled Pavers - Sunset Buff



CASTLE GREY



SUNSET BUFF

SILLS

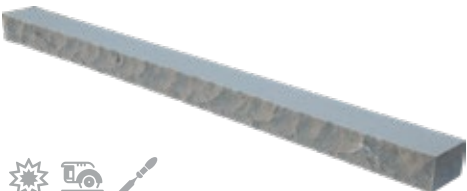
Natural stone sills are a great eye-catcher. They add an unusual sense of beauty and offer great durability to your window frame.



SIZE LENGTH X WIDTH X THICKNESS
36" X 2.5" X 2" (91cm x 6cm x 5cm)

Sills - Castle Grey

Finish : Surface Suede, Front long edge rock faced & three edges sawn



CASTLE GREY



SUNSET BUFF



SIERRA



TREADS

Incorporating natural stone treads on steps is the perfect way to add warmth and character to any elevation change. Our full range of Treads is available in 9 fascinating colors with different textures and sizes. These treads can also be used as wall caps to make a perfect design statement in your backyard, garden, or patio.



Treads - Castle Grey

Finish : Top Natural, edges rock faced

  	SIZES	
	LENGTH X WIDTH X THICKNESS	
	48" X 12" X 2" (121cm X 30cm X 5cm)	
	48" X 14" X 2" (121cm X 35cm X 5cm)	
	48" X 18" X 2" (121cm X 45cm X 5cm)	
CASTLE GREY	48" X 24" X 2" (121cm X 60cm X 5cm)	
	72" X 12" X 2" (121cm X 30cm X 5cm)	
	72" X 14" X 2" (121cm X 35cm X 5cm)	
	72" X 18" X 2" (121cm X 45cm X 5cm)	
	72" X 24" X 2" (121cm X 60cm X 5cm)	
  	96" X 12" X 2" (121cm X 30cm X 5cm)	
	96" X 14" X 2" (121cm X 35cm X 5cm)	
	96" X 18" X 2" (121cm X 45cm X 5cm)	
	96" X 24" X 2" (121cm X 60cm X 5cm)	
	SIZES	
  	LENGTH X WIDTH X THICKNESS	
	72" X 12" X 2" (182cm X 30cm X 5cm)	
	72" X 14" X 2" (182cm X 35cm X 5cm)	
	72" X 18" X 2" (182cm X 45cm X 5cm)	
	SIZES	
  	LENGTH X WIDTH X THICKNESS	
	72" X 12" X 2" (182cm X 30cm X 5cm)	
	72" X 14" X 2" (182cm X 35cm X 5cm)	
	72" X 18" X 2" (182cm X 45cm X 5cm)	
	72" X 24" X 2" (182cm X 60cm X 5cm)	
AUTUMN BROWN	SIZES	
	LENGTH X WIDTH X THICKNESS	
	72" X 12" X 2" (182cm X 30cm X 5cm)	
	72" X 14" X 2" (182cm X 35cm X 5cm)	
	72" X 18" X 2" (182cm X 45cm X 5cm)	
  	LANIER	
	SIZES	
	LENGTH X WIDTH X THICKNESS	
	72" X 12" X 2" (182cm X 30cm X 5cm)	
	  	CLOUDY BLACK
SIZES		
LENGTH X WIDTH X THICKNESS		
72" X 12" X 2" (182cm X 30cm X 5cm)		
  		SIERRA
	SIZES	
	LENGTH X WIDTH X THICKNESS	
	72" X 12" X 2" (182cm X 30cm X 5cm)	
	  	OCHRE YELLOW
SIZES		
LENGTH X WIDTH X THICKNESS		
72" X 12" X 2" (182cm X 30cm X 5cm)		
72" X 14" X 2" (182cm X 35cm X 5cm)		
  	IMPERIAL WHITE	
	SIZES	
	LENGTH X WIDTH X THICKNESS	
	72" X 12" X 2" (182cm X 30cm X 5cm)	
	72" X 18" X 2" (182cm X 45cm X 5cm)	

STEPS

Add finishing touches to your design with our range of sandstone steps. They add elegance to your garden or patio design by complementing existing elements present in the space.



SIZE
LENGTH X WIDTH X THICKNESS
48" X 16" X 6" (121cm X 40cm X 15cm)

Steps - Castle Grey



Steps - Sunset Buff

Finish : Surface Suede, 3 edges rock faced & 1 long edge sawn.

Finish : Hollowed, all edges rock faced



CASTLE GREY



CASTLE GREY - HOLLOWED



SUNSET BUFF



SUNSET BUFF - HOLLOWED

COPINGS

Our natural stone copings can give your pool a modern and more contemporary appearance. They have a practical and visual edge that enhances the overall look of your property.



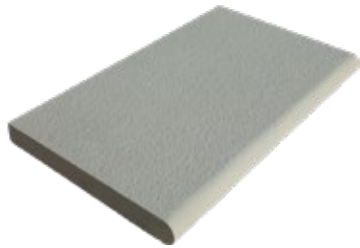
SIZE
LENGTH X WIDTH X THICKNESS
24" X 14" X 2" (30cm X 35cm X 5cm)

Copings - Sunset Buff

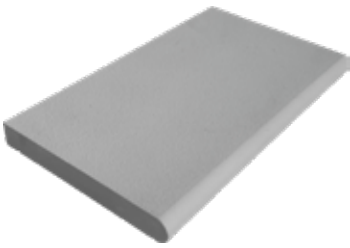


Copings - Imperial White

Finish : Surface Suede, 1 long edge bullnosed 3 edges sawn



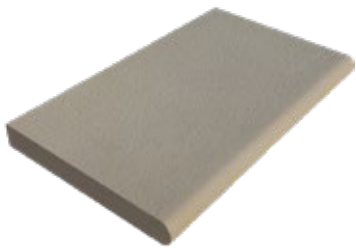
OCHRE YELLOW



CASTLE GREY



IMPERIAL WHITE



SUNSET BUFF

STEPPING STONES

Stepping Stones are a great way to add a wonderful distinctive feature to any garden. They offer a practical solution to help you walk in the garden and add visual interest to the space. Our range of stepping stones is perfect to create the contemporary garden look you have been dreaming of.



Stepping Stones - Castle Grey



SIZE
LENGTH (RANDOM) X WIDTH (RANDOM) X THICKNESS
24" X 18" X 1" (60cm X 45cm X 2cm)



Stepping Stones - Autumn Brown



AUTUMN BROWN



CASTLE GREY



SUNSET BUFF

DECORATIVE PEBBLES

Natural stone pebbles can easily blend in with their surroundings, making them suitable for any design or style concept. They are the greatest landscaping material for gardens and other outdoor spaces. Pebbles are visually pleasing to the eye and provide a classy and timeless look to your space.



Decorative Pebbles - Blanco

SIZES

*	0.75" - 1.75" (1cm X 1cm)
#	1" - 2.5" (2cm X 6cm)
°	2.0" - 4.0" (5cm X 10cm)

The Size marked with (*) is only available in Rainbow Decorative Pebbles.

The size marked with (#) is available in all colors except Lakeside Decorative Pebbles.

The size marked with (°) is only available in Lakeside Decorative Pebbles.



ATLANTIC



BLANCO



CHESAPEAKE



COPPER



GOLDEN YELLOW



LAKESIDE°



MIDNIGHT



RAINBOW*

Installation Guidelines

For Natural Stone Paving

1. CHECK YOUR PRODUCT

Before any work is carried out, each piece of natural stone should be inspected, both wet and dry, prior to laying as pieces will vary. No returns can be accepted once the product is installed, so it is important to confirm you are happy with your product before proceeding. When work begins, ensure the area is cleared of all vegetation and debris. Then, ideally using a scaled drawing of your planned area, you can start plot pointing by marking out the space using pegs and a string line.

2. PREPARE YOUR BASE

- Remove topsoil as from the area to be paved.
- Base materials may consist of granular materials (crushed aggregates) to be placed in a 6" layer. The thickness of base will vary with type of soil subgrade and climate, colder climates may require thicker bases. Soil conditions may vary (*).
- The sub-base layer should be thoroughly compacted with enough water to aid compaction, increase density and control dust. Install Geotextile fabric to separate the subsoil from the base, as required by design.
- Once the desired compaction has been achieved place a 1" (2.5cm) bedding layer of loose sand on top, ensuring that the base is level by using a string line or screening board (*).
- Patios should be laid with slope to drain off rain water. This slope should be at least 1/4" drop for every foot away from the house.

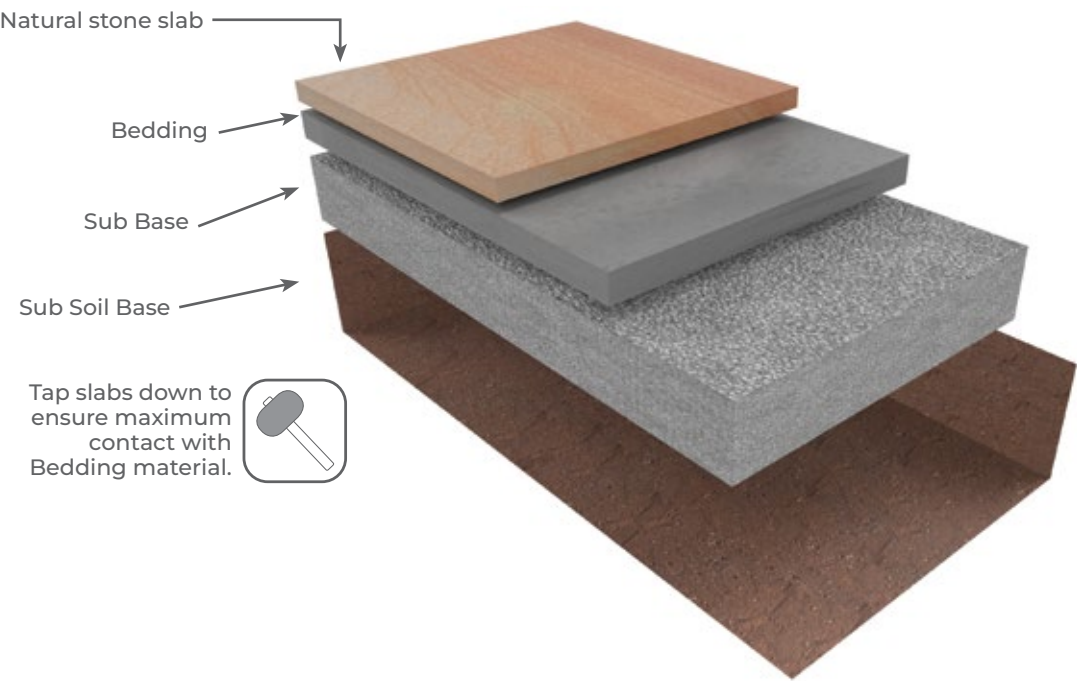
3. LAY YOUR SLABS

- Choose the design that you wish to lay, then starting in a corner carefully place the first slab in position and gently tap down using a rubber mallet.
- The bedding layer of loose concrete sand allows for leveling the surface of each slab which may vary from piece to piece due to their texture. (*)
- Slabs may be laid with up to 1/2" (1.2cm) joints and filled with Polymeric/Resin Sand on completion of installation. Install edge restraints.

When using Polymeric Sands or Joint Sands; adhere to manufactures recommendations and guidelines (*).

We recommend ULTIMATE Universal All weather Paving Joint Compound.

(*) Base type and bedding techniques may vary such as use of hybrid base; plastic grids and/or foam base materials. Bedding material may consist of hybrid system or open graded material (small coarse aggregate). Adhere to manufactures recommendation, guidelines, and local soil conditions.

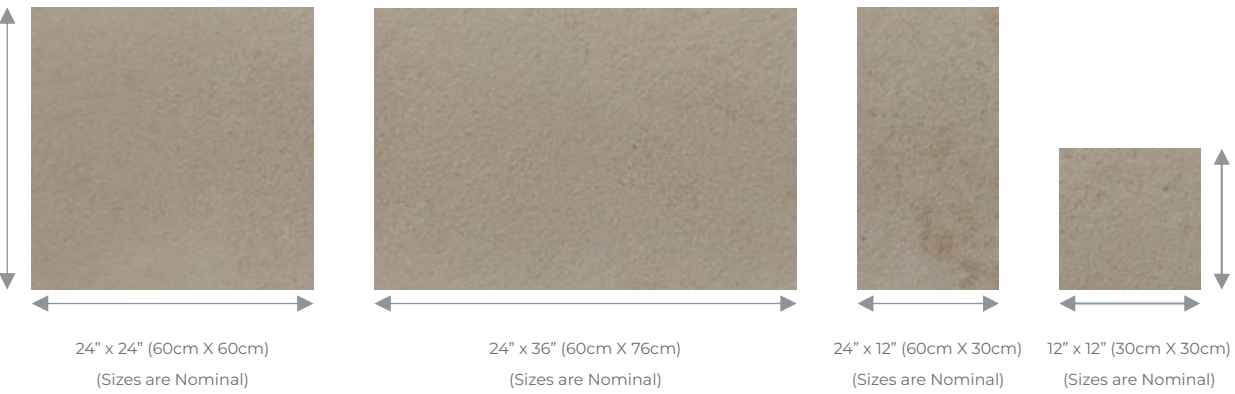


Do not clean with Muriatic Acid / No Limpiar con acido muriatico

Under no circumstances should a mechanical compactor be used directly on the slab surface.
Bajo ninguna circunstancia debera usarse la compactadora mecan/ca directamente sobre la superficie de la piedra.

Sizes & Laying Pattern

SAWN EDGES



HAND SPLIT EDGES



LAYING PATTERNS



STANDARD

REPEATABLE

General Information

Color

Every effort has been made to give true representation of color in all photographs. Due to the natural variation in the natural stone products, each stone product will have its own unique character and appearance. It is important to view a range of samples to acknowledge the authentic diversity in colors, texture, veining, and markings.

Dimensions

All dimensions are nominal and are subject to manufacturing tolerance.

Maintenance & Sealers

Regular maintenance is required to keep the overall appearance of the product in pristine condition. Kindly note some natural stone pieces may contain small iron content and when in contact with water can oxidize causing rust marks to the surface of paving. There are numerous proprietary stain/rust removal products on the market that can be used with Natural Stone. When using these products always follow manufacturer's application, instructions, and safety advice. When using cleaner/sealers consult with manufacturers recommendation and applications methods.

Health & Safety

Some Products in our range are heavy. It is suggested that items which are 25 Kg (55 lbs.) or those that are awkward in shape should be handled by more than one person or by suitable lifting equipment . It is suggested that work gloves, eye protection and respiratory protection are used whenever appropriate.

Installation Guidelines

Visit www.worldofstones.com for further information.



follow us on



© Copyright World of Stones

This publication should not be reproduced in any form without prior written agreement of World of Stones.